



IMPACT T10 Intelligent Camera

PPT VISION

The **FIRST** Intelligent Camera with **ALL** of the Features of a Full-Scale Vision System

- *High Speed Image Processing*
- *Self-contained micro-processor*
- *Visual Programming*
- *Broad Range of Inspection Algorithms*
- *Complete set of HMI tools*
- *Create Custom Turnkey Applications*
- *Rugged Industrial Hardware with Real Time Operating System*



The **IMPACT™ T10 Intelligent Camera** has all the capabilities of a high performance vision system within a compact and rugged module.

Designed for real-time industrial applications, IMPACT is a sealed device, with no moving parts, containing the essential components of machine vision into a single package. This includes a high-speed microprocessor, solid state memory, optically isolated I/O, serial interface, and real time operating system inside, plus digital imaging and Ethernet connectivity.

The IMPACT Machine Vision Micro-System architecture contains a comprehensive visual programming toolkit called **Inspection Builder™**.

Inspection builder software contains image processing tools to deliver complete custom application programs within an easy to use interface.

Image processing programs are configured by selecting tools from a broad range of inspection algorithms, including high accuracy

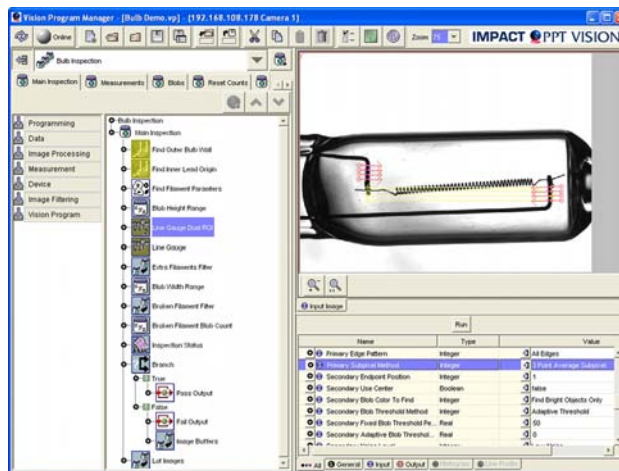
measurement, defect detection, part location, package inspection, character reading, and data matrix code reading.

For fine-tuning, parameters can be manipulated within the inspection program, and for complex applications, advanced programming concepts such as multi-tasking, subroutine management, and recipe control can be achieved.

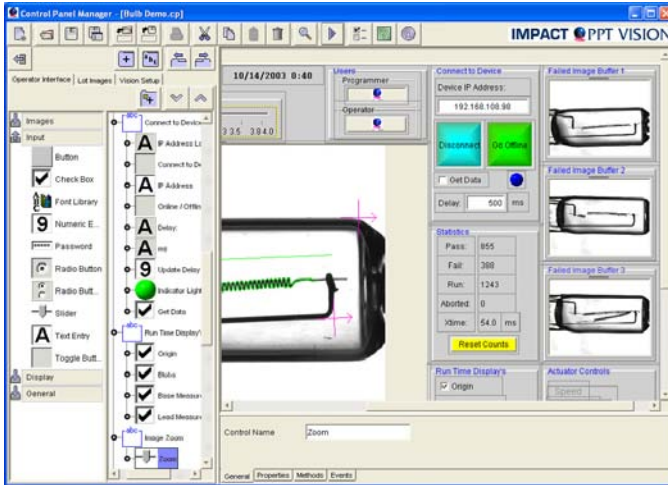
A complete HMI visual developers toolkit is included with **Inspection Builder** software (see back side of this document). Users can create complete turnkey solutions including a real-time operator interface, custom

designed for plant floor operators and engineers. This provides image display and defect alerts, plus real-time image processing results and fast part change-over.

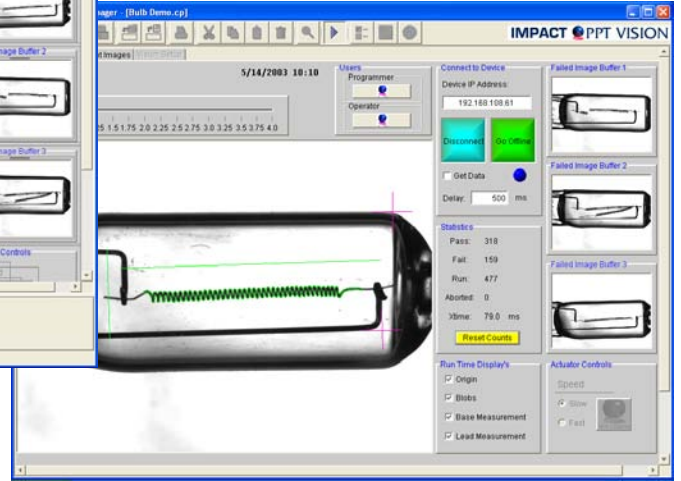
With the performance of a full-scale vision system contained within a compact industrial package, **IMPACT Machine Vision Micro-System** is a cost effective, scalable vision system for a broad range of inspection solutions.



PPT VISION



Complete turnkey solutions can be created with *Inspection Builder™* Software. Visual Programming is used to achieve a custom HMI for unique plant floor requirements.



Custom HMI panels are developed for real-time operation, then deployed by TCP/IP Ethernet, to the plant floor. Plant floor operators use the real-time control panels for image display and defect alerts, plus real-time image processing results and fast part change-over.

Specifications:

Processor

1000 MIPS
128 Meg RAM
128 Meg Flash Memory

Dimensions: 5.25 L x 2.5 W x 1.75 H in
(137 x 63 x 45 mm)

Weight: .85 lb (.37 kg)

Operating Parameters

Power Requirement: 24 VDC / 1.0 A
Ambient Temperature: 0° to 50° C

Communications

Ethernet – 10 / 100 Mbps Base-T
Serial – Up to 115K Baud Rate
LAN / WAN Connectivity

I/O

1 Camera Trigger Event
2 Dual-Purpose Event/Polled Inputs
2 Outputs
1 Strobe Output

Imager

(Setup Completely Software Controlled)
640 x 480, 60 Fps, Digital

Software

Inspection Builder™

Blob	Pattern Find
OCR / OCV	Data Matrix
Template	Contrast
Sub-pixel Gauge	BASIC
Filtering	Morphology
Serial / TCP/IP	Lens Distortion Calibration
ActiveX Controls	Automatic Lighting Adjustment
Auto-Simulation	Embedded Image Calibration



PPT VISION, INC.
12988 Valley View Rd
Minneapolis, MN 55344
Phone 952-996-9500
Fax 952-996-9501
info@pptvision.com
www.pptvision.com
ISO 9001
REGISTERED

© PPT VISION



PPT VISION