



Product Data Sheet

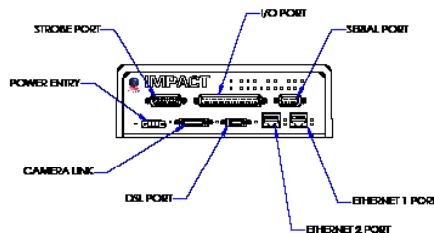
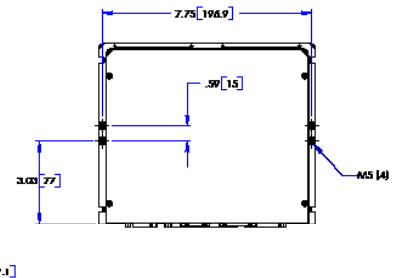
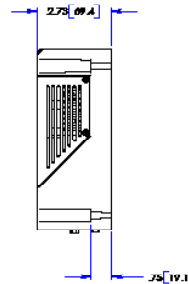
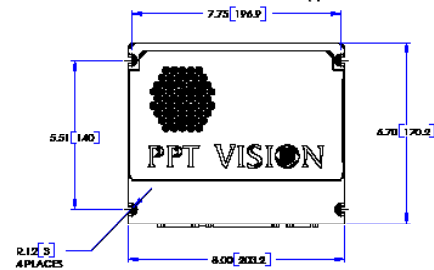
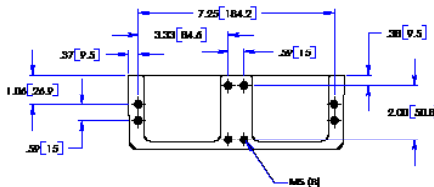
IMPACT C Series Processor

Industry's Best High Performance Intelligent Cameras



- Rugged Industrial Hardware with Real Time Operating System
- High Speed Image Processor; 2000 MIPS
- Integrated I/O, Serial, and Ethernet communication ports
- Visual Programming, with over 100+ vision tools and HMI controls to create a full range of vision application solutions
- Supports a full range of IMPACT digital C-series cameras as well as CameraLink cameras

IMPACT™	Part Number	Power	Dimensions	Weight	Operating Temperature	I/O
C Series Processor	661-0326-C40	24VDC@2A	7.99 x 6.75 x 2.75 in (203 x 172 x 70 mm)	3.5 lb (1.59 kg)	-5° to 45° C	PNP/NPN



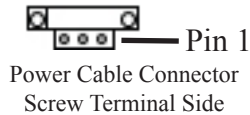
NOTES:
1. Dimensions are inch [mm].

Product Data Sheet

IMPACT C Series Processor

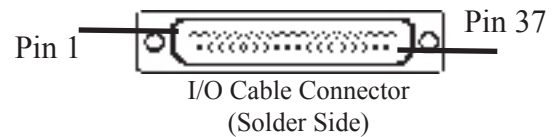
Power Supply Cable Layout

Pin Number	Signal Name
1	24 Vdc Supply Plus
2	24 Vdc Supply Minus or Common
3	Chassis Ground



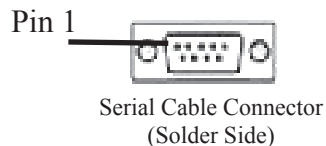
Input/Output Cable Layout

Terminal	Signal Name	Terminal	Signal Name
1	Trigger In +	11	Output 5 +
20	Trigger In -	30	Output 5 -
2	Shift In +	12	Output 4 +
21	Shift In -	31	Output 4 -
3	Event In +	13	Output 3 +
22	Event In -	32	Output 3 -
4	Input 4 +	14	Output 2 +
23	Input 4 -	33	Output 2 -
5	Input 3 +	15	Output 1 +
24	Input 3 -	34	Output 1 -
6	Input 2 +	16	No Conn
25	Input 2 -		
7	Input 1 +	18	Strobe Trig 3 +
26	Input 1 -	35	Strobe Trig 3 -
8	Online Out +	17	Strobe Trig 2 +
27	Online Out -	36	Strobe Trig 2 -
9	Busy (acquire) Out +	19	Strobe Trig 1 +
28	Busy (acquire) Out -	37	Strobe Trig 1 -
10	Output 6 +		
29	Output 6 -		



Serial Cable Layout

Pin	Signal Name	Pin	Signal Name
1	Carrier Detect (CD)	6	Data Set Ready (DSR)
2	Received Data (RxD)	7	Request to Sent (RTS)
3	Transmit Data (TxD)	8	Clear to Send (CTS)
4	Data Terminal Ready (DTR)	9	Ring Indicator (RI)
5	Signal Ground (GND)		



Strobe Cable Layout

Terminal	Signal Name	Terminal	Signal Name
1	Strobe Trigger 1 +	7	Strobe Power 24VDC Enable (when connected to Common)
9	Strobe Trigger 1 -		
2	Strobe Trigger 2 +	8, 15	Strobe Power (24 VDC 500 mA Max)
10	Strobe Trigger 2 -		
3	Strobe Trigger 3 +	12	Strobe Trigger 1 (TTL level, signal return is Common)
11	Strobe Trigger 3 -		
4	No Conn	13	Strobe Trigger 2 (TTL level, signal return is Common)
5, 6	Common	14	Strobe Trigger 3 (TTL level, signal return is Common)

